

kühlen

FEEL AT HOME

KUHLEN LIVING



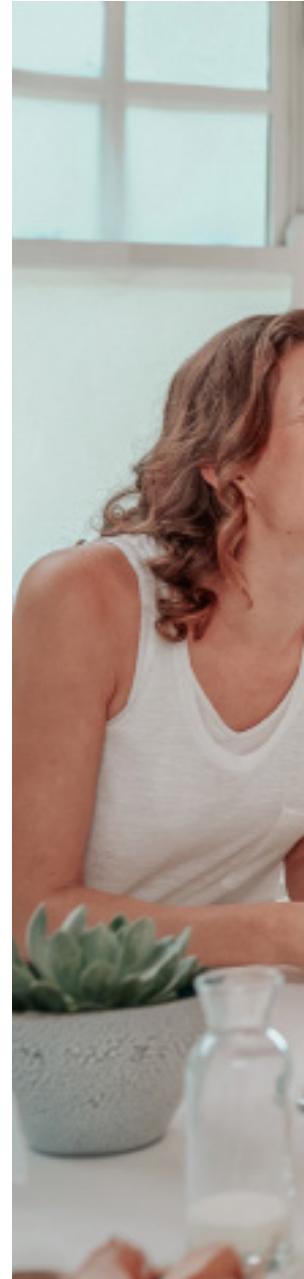
KUHLENLIVING.COM

HOME SOLUTIONS
MADE EASY

FEATURED
+ KITCHEN + VANITY + WARDROBE + APPLIANCES

ABOUT KÜHLEN

At Kühlen we remove the inconvenience and confusion associated with the complexities of home décor selection. With our range of quality, yet affordable kitchens, wardrobes, and vanities, we provide a customised solution personalising your space, your way





Featured

- + Carrara Lux Quartz Benchtop
- + Classic White Painted Doors
- + Handleless Doors & Drawers
- + Soft Close Fittings

Featured

- + Quartz Benchtops
- + Wood Veneer Doors
- + Painted Doors
- + Glass Splashback
- + Handleless Doors & Drawers
- + Soft Close Fittings

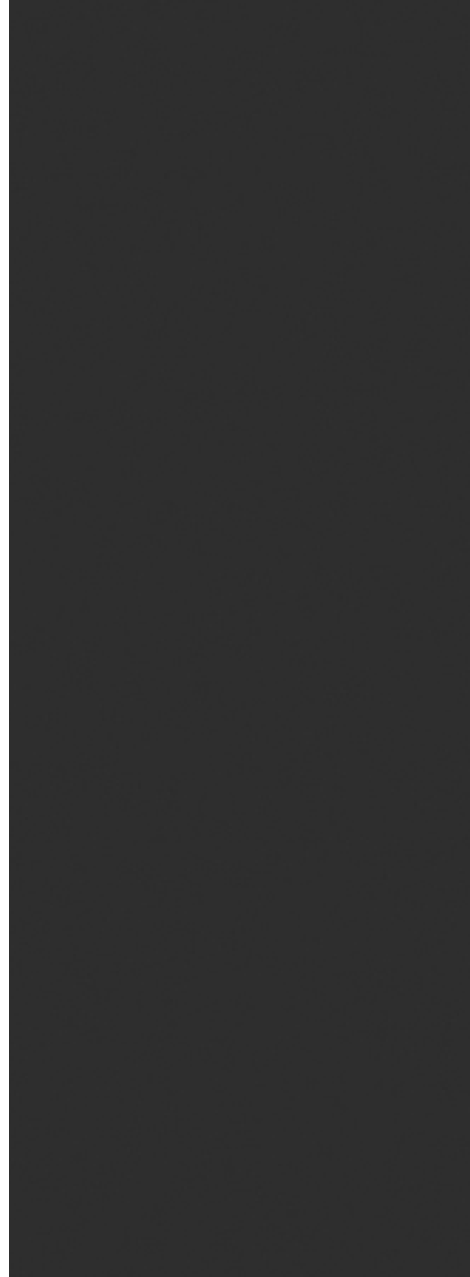
Our modular system is designed to suit every budget and lifestyle. With Kühlen you can create a design suitable for even the most challenging of spaces.





NATURAL

Give your kitchen a warm, vibrant, modern feeling, utilising our luxurious range of materials in their natural state. Selecting a wood grain will emphasize the individuality of the space. The timeless authenticity of timber will enhance any setting.



**Featured**

- + Arctic Mink Quartz Benchtops
- + Teak Veneer Doors
- + Midnight Grey Painted Doors
- + Handleless Doors & Drawers
- + Soft close fittings

BRIO

Customising your kitchen is fun and easy with our doors and solid surface bench tops. Brio is finished in highly durable, two pack, double sided painted sea blue doors which are customisable from our colour range, to create a warm and welcoming environment





Featured

- + Arctic Mink Quartz Benchtops
- + Sea Blue Painted Doors
- + Handleless Doors & Drawers
- + Soft close fittings

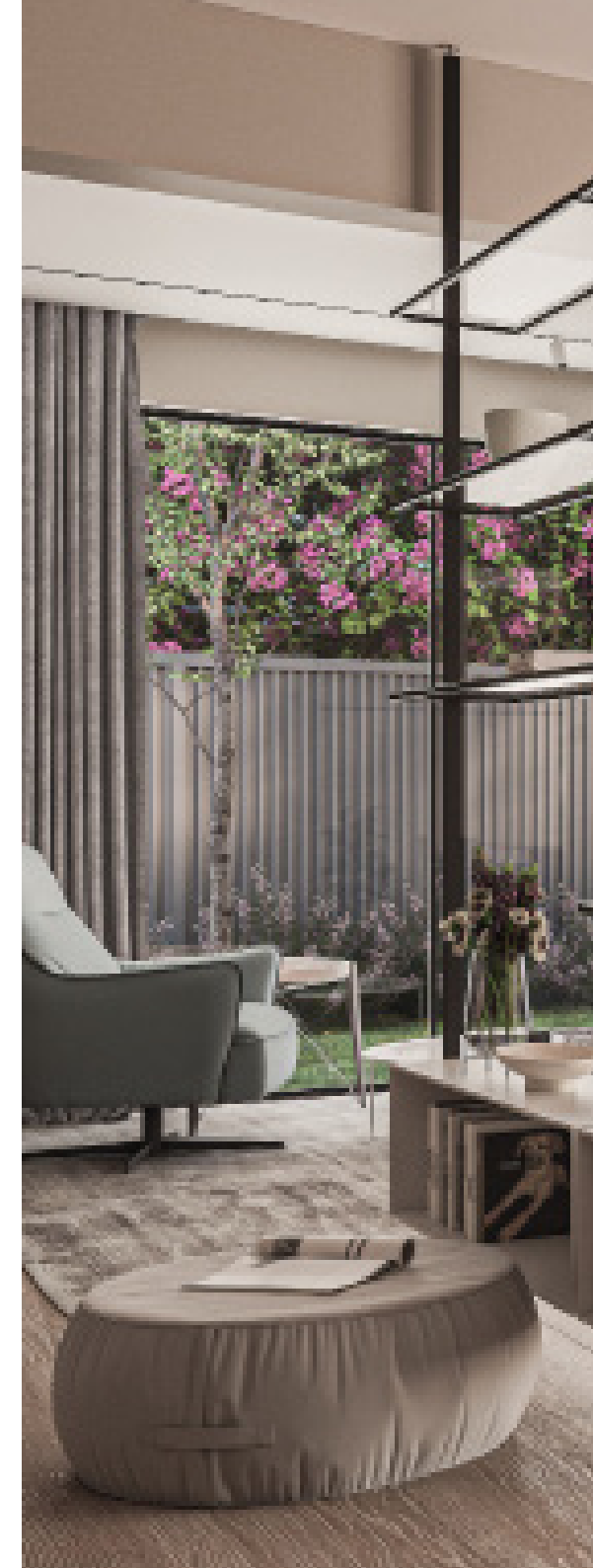
MINIMALIST

Personalising your kitchen with feature panels creates a high-end luxe appearance. Crisp white quartz ensures a minimalist look. Combining painted and wood feature finishes result in a sleek yet warm contemporary finish



Featured

- + Pearl White Quartz Benchtop
- + Teak Veneer Doors
- + Classic White Painted Doors
- + Handleless Doors & Drawers
- + Soft close fittings





AMBROSIA

Available in many sizes our Ambrosia range ensures a perfect fit. Ambrosia allows a beautiful, functional space whilst maintaining an uncluttered style

Featured

- + Pearl White Quartz Benchtops
- + Pearl Gray Painted Doors
- + Wenge Veneer Feature Doors
- + Pearl White Splashback





++

Why should you buy from us?

Kühlen Living is where intelligent concepts integrate with functional applications. By providing customised solutions that incorporate premium finishes, your kitchen, bathroom, or wardrobe is sure to have a bespoke finish, and feel, showcasing a beautiful & timeless design. Our products are manufactured to the highest



Australian Standards. Our ethos is to utilise materials that are practical, durable, and that have a minimal carbon footprint



Our premium outdoor cabinets are both waterproof and recyclable. Featuring a handless design these products allow for a contemporary design, that is functional and elegant. Exploring and expanding on your own ideas is easy! Start a conversation today either online, or with a Kühlen Authorised distributor. Alternatively create your own vision online utilising our range of integrated immersive 3D Applications which allow you to easily create your design, in your own time. Our interactive design system not only gives you access to all Kühlen products and services, but additionally provides you with instantaneous pricing. Should you require further assistance we can connect you directly with one of our experts via video chat.



Our living spaces reflects our individuality. The Design of those space is an expression of who we are and how we envisage interacting within. For this reason, Kühlen give you complete control of the design process, ensuring your expectations are exceeded



+ Kühlen Ecosystem

With technology at the forefront of every design, a seamless customer experience is achieved. Our immersive and interactive digital eco systems empowers you to customise a design and choice that suits your lifestyle.



+ DESIGN TOOL

ONLINE TOOL WITH TOTAL
CREATIVE CONTROL



+ AR App

VISUALISE KITCHEN IN
YOUR ACTUAL SPACE



+ Virtual Store

IMMERSIVE 3D STORE ON
YOUR BROWSER

**Human Touch**

Our technology platform is naturally supported by our Nationwide distributors who can be engaged at any stage.

+ Immersive Tech

DESIGN YOUR KITCHEN

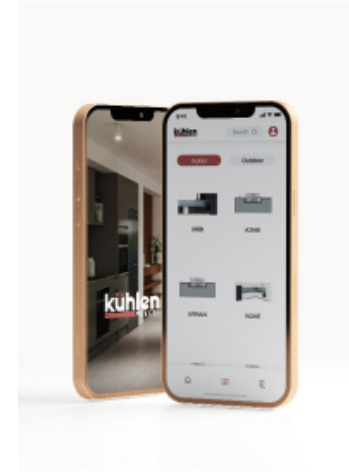
FOR CREATIVE CONTROL

Our immersive online tools give you complete control allowing you to create a functional design to suit all budgets

AUGMENTED REALITY APP

TO VISUALISE YOUR KITCHEN

Select from an extensive range of ready to install kitchens and visualise the design in situ, from the comfort of your own home, at your convenience. Simply upload your design measurements for a customised solution.



19

Kühlen Living



VIRTUAL STORE

FOR IMMERSIVE SHOPPING

Take the journey through our virtual store and interact with the full Kühlen range. This immersive 3d experience is an ingenious tool aimed solely at assisting you with research, inspiration, and final choices for whatever Kühlen product you've decided is right for you.

**Featured**

- + 100% Waterproof Cabinets
- + Wood Veneer Doors
- + Granite Benchttop
- + Handleless Drawers
- + Soft Close fittings

+ Our Products

BATHROOM VANITY

LUXE

Whether floor mounted or Wall hung, our vanities are designed to create a perfect mix of storage, style, and functionality.

KITCHEN & APPLIANCES

Our selection of indoor and outdoor appliances fit perfectly with your Kühlen kitchen. European design and function at your fingertips.



21

Kühlen Living



WARDROBE

CARRIE

With a number of design choices our sliding wardrobe range is designed to fit seamlessly into a range of room sizes.

**Featured**

- + Dove Grey Quartz Benchtop
- + Classic White Painted Doors
- + Handleless Doors & Drawers
- + Soft close fittings

+ Indoor Kitchens

ISLA

A spacious kitchen island for the entertainer

AJANI

Midnight Grey doors, featuring clean lines and integrated handles the Ajani is sure to enhance any space. The kitchen for every-day life



23

Kühlen Living



MAJA

The rich oak tones, pearl white glass, and customised splashback gives Maja, a luxe and exclusive design style.

**Featured**

- + 100% Waterproof Cabinet
- + Brushed Steel Doors
- + Black Pearl Benchtop
- + Handleless Doors & Drawers
- + Soft Close Fittings

+ Outdoor kitchens

AGNI

Slim line compact laminates coupled with durable granite and Julius Stone as a splashback are the perfect match for your outdoor entertainment area

THOR

With Cinder Grey doors in slim 13MM with a black core edge and shark nose profile matched with Pearl Grey granite tops and a BBQ cabinet suitably ventilated for a flat hood BBQ, simply everything you need in a sleek contemporary designed outdoor kitchen



25

Kühlen Living



AROS

Brushed Steel compact laminate doors and Pearl Grey granite benchtops. The AROS perfectly complements any outdoor area

+ Wardrobes

Featured

- + Lacquered & clear glass
- + Wheels & tracks rated for 120 kgs
- + Soft Close on sliding doors
- + Floor to ceiling ready to install options

JESSICA

Design your space with Kühlen wardrobes to complete your home. Featuring slim mirror frames and a customisable internal layout





**Featured**

- + 100% Waterproof Cabinets
- + Brushed Steel Doors
- + Pearl Black Benchtop
- + Handleless Doors
- + Soft Close Fittings

CLASSIC

Kühlen bathroom Vanities are adaptable and completely customisable, featuring a multitude of options. They are simple to assemble and affordable.

+ Vanity

Featured

- + 100% Waterproof Cabinets
- + Teak Doors
- + Dove Grey Quartz Benchtop
- + Handleless Doors
- + Soft Close Fittings

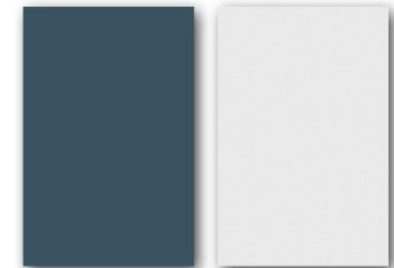
**LUXE**

Make the morning rush less stressful with our double sink vanity design that ensures everything is easily within reach each and every time. Many options are available for all styles and tastes



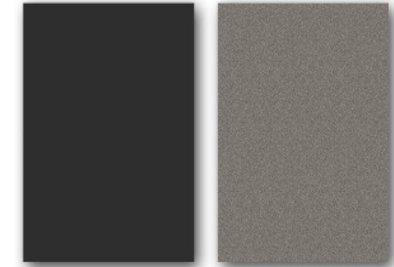
FINISHES

Personalise your design with our extensive range of doors, benchtops, colours, and accessories. Whatever your personal design idea is, at Kühlen, we're sure to have something that exceeds your expectation



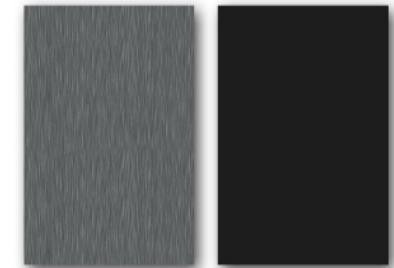
SEA BLUE

CLASSIC WHITE



MIDNIGHT GREY

PEARL GREY



BRUSHED STEEL

CINDER GREY



BENCHTOPS

With a premium colour range of quartz and granite benchtops, at Kühlen, we're sure to have something to create that centrepiece of your kitchen. We highly recommend granite for outdoor applications and quartz for indoor use.

WOOD



TEAK

OAK

WENGE

The rich wood tones of veneer doors gives your design a crafted and exclusive feel.



CARRARA LUX



PEARL WHITE



DOVE GREY



ARCTIC MINK



PEARL BLACK



PEARL GREY

KÜHLEN LIVING

An interactive alternative to the traditional standard offerings of yesteryear. At Kühlen we put you in complete control of your design ideas with endless customisable variations ensuring we meet your design and budget expectations. Whether you are renovating or building a new home, we want you to feel at ease, every step of the way.

Kühlen Living Pty Ltd
Suite 7, First Floor, 56 Kings Park Road,
West Perth, WA 6005

Contact**Australia**

Retail: Paul Lowthorpe: +61 411 558 968

Commercial: Craig Hucker: +61 481 333 337

India

Retail: Malthie Shetty: +91 959 423 9109

Commercial: Shubham Upadhyay: +91 730 391 3777

